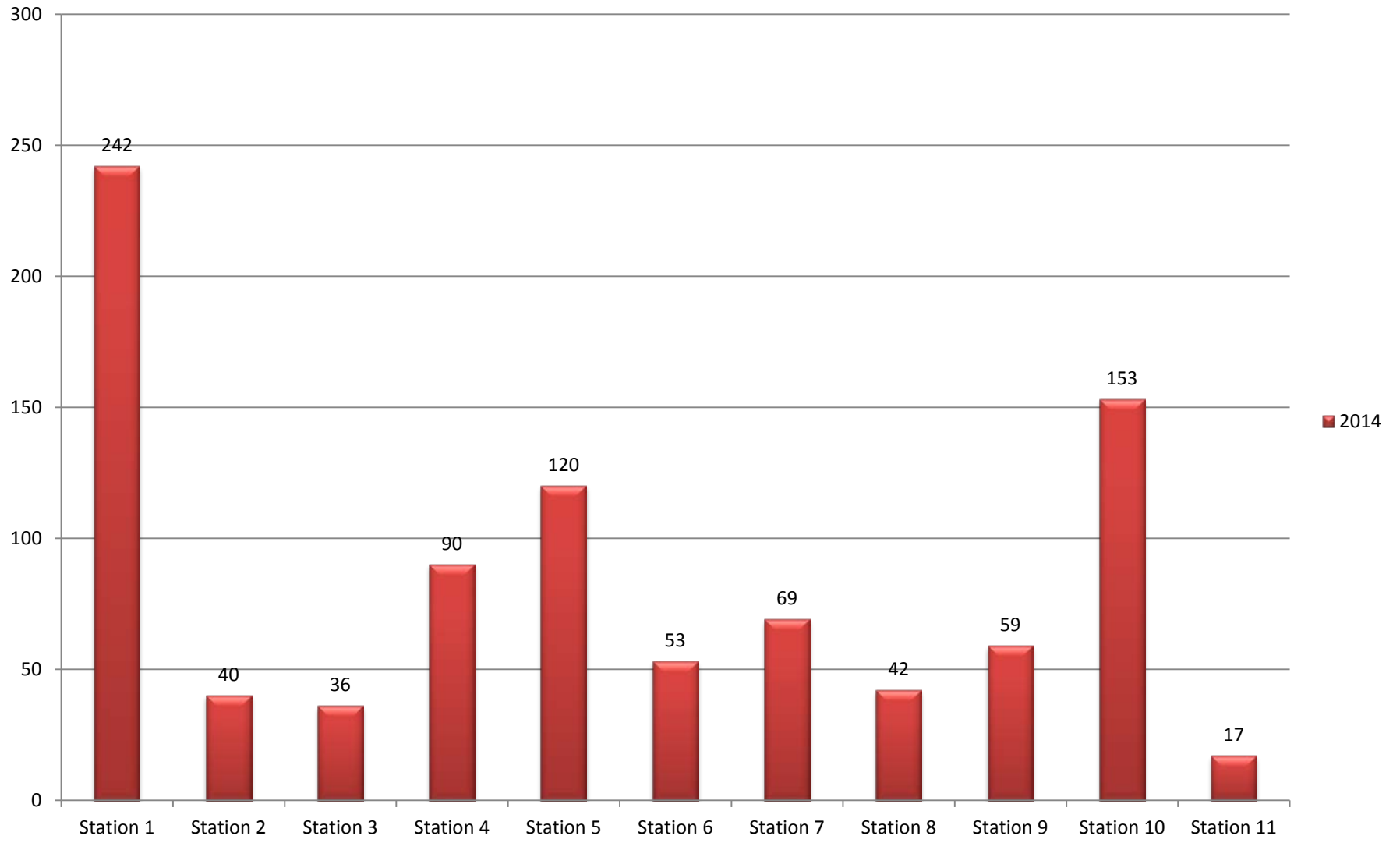


# Johnson County Fire Protection District

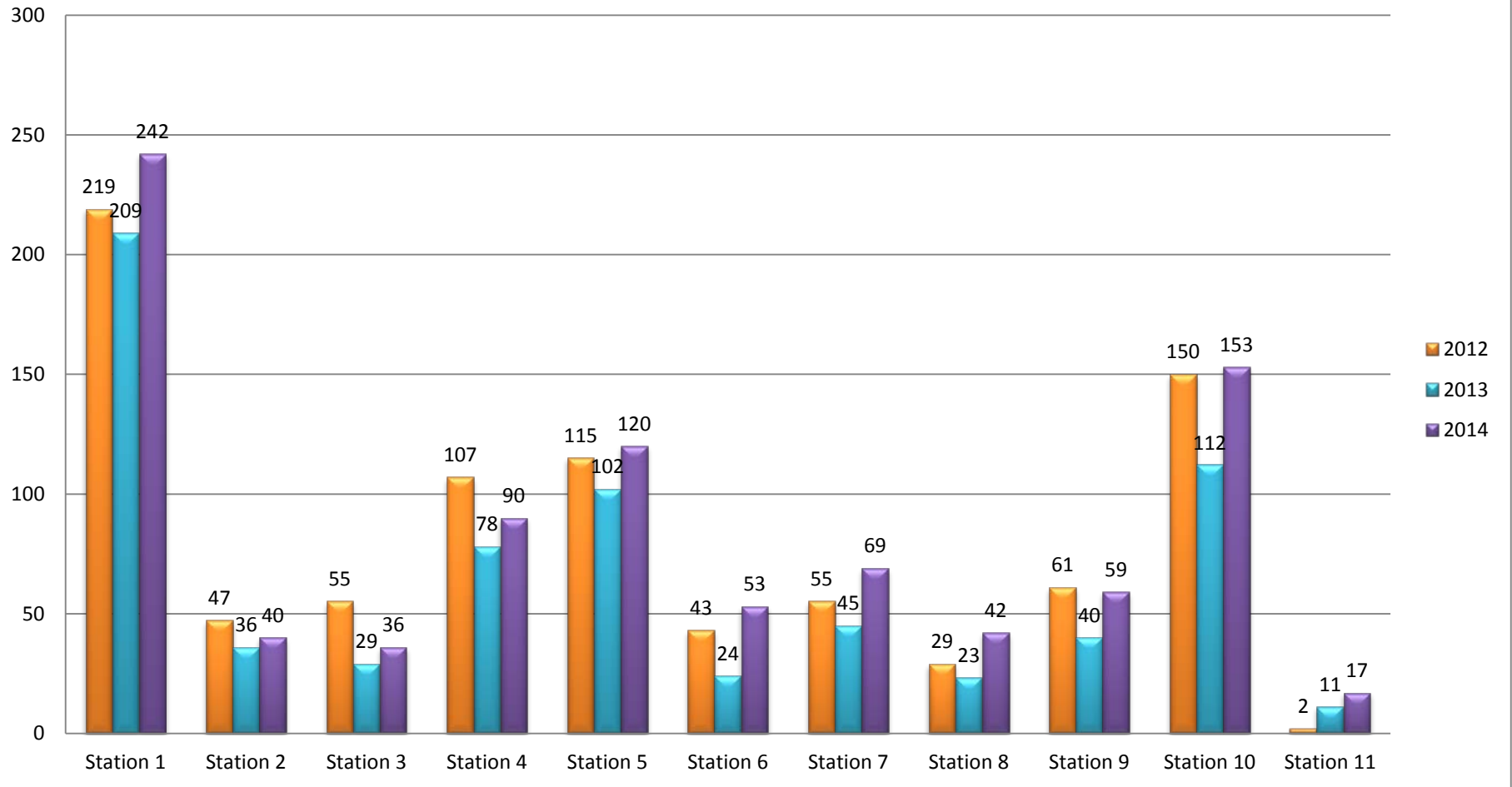


## 2014 Response Summary

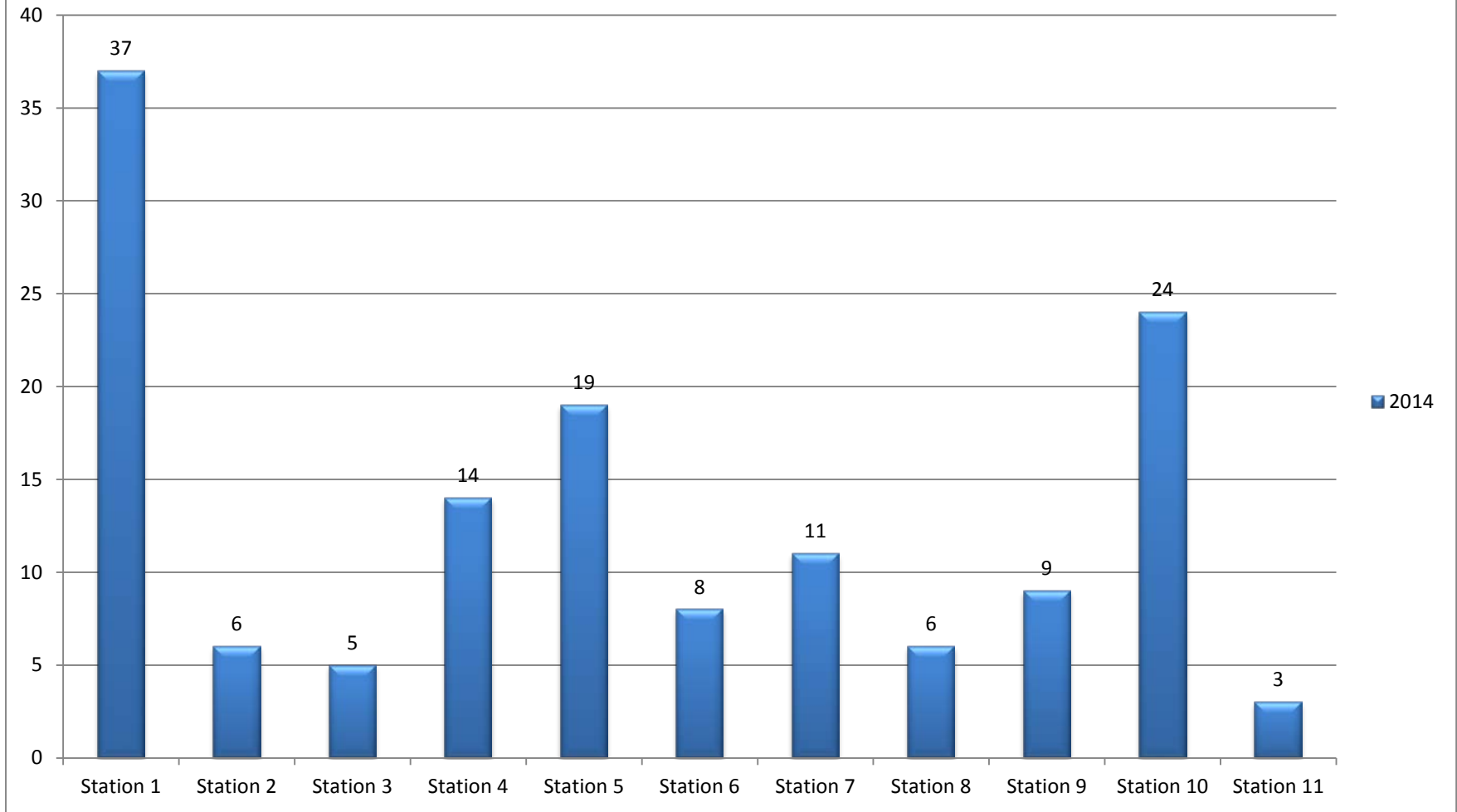
## Number of Responses Per Station



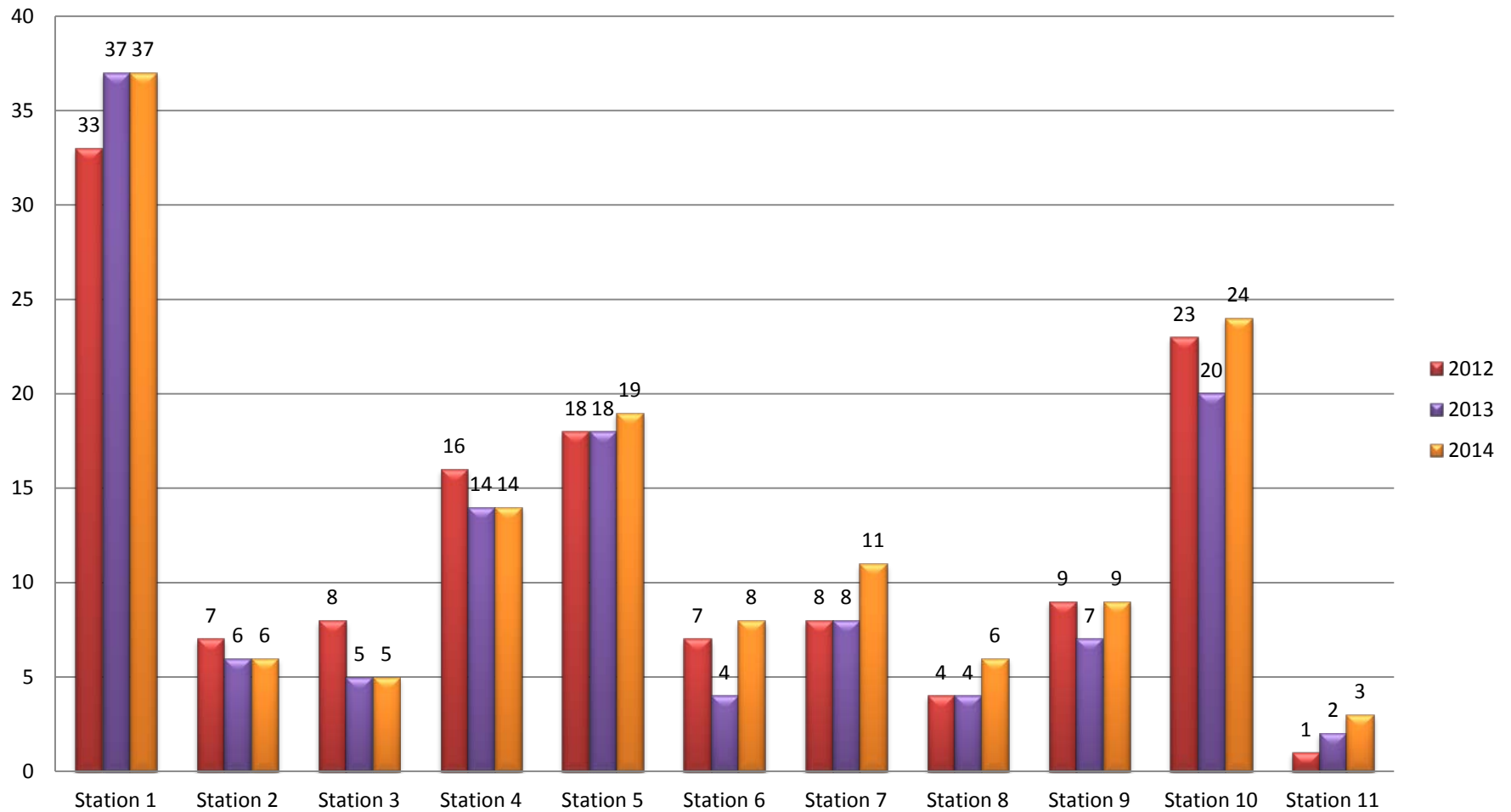
## Number of Responses Per Station - 3 Year Comparison



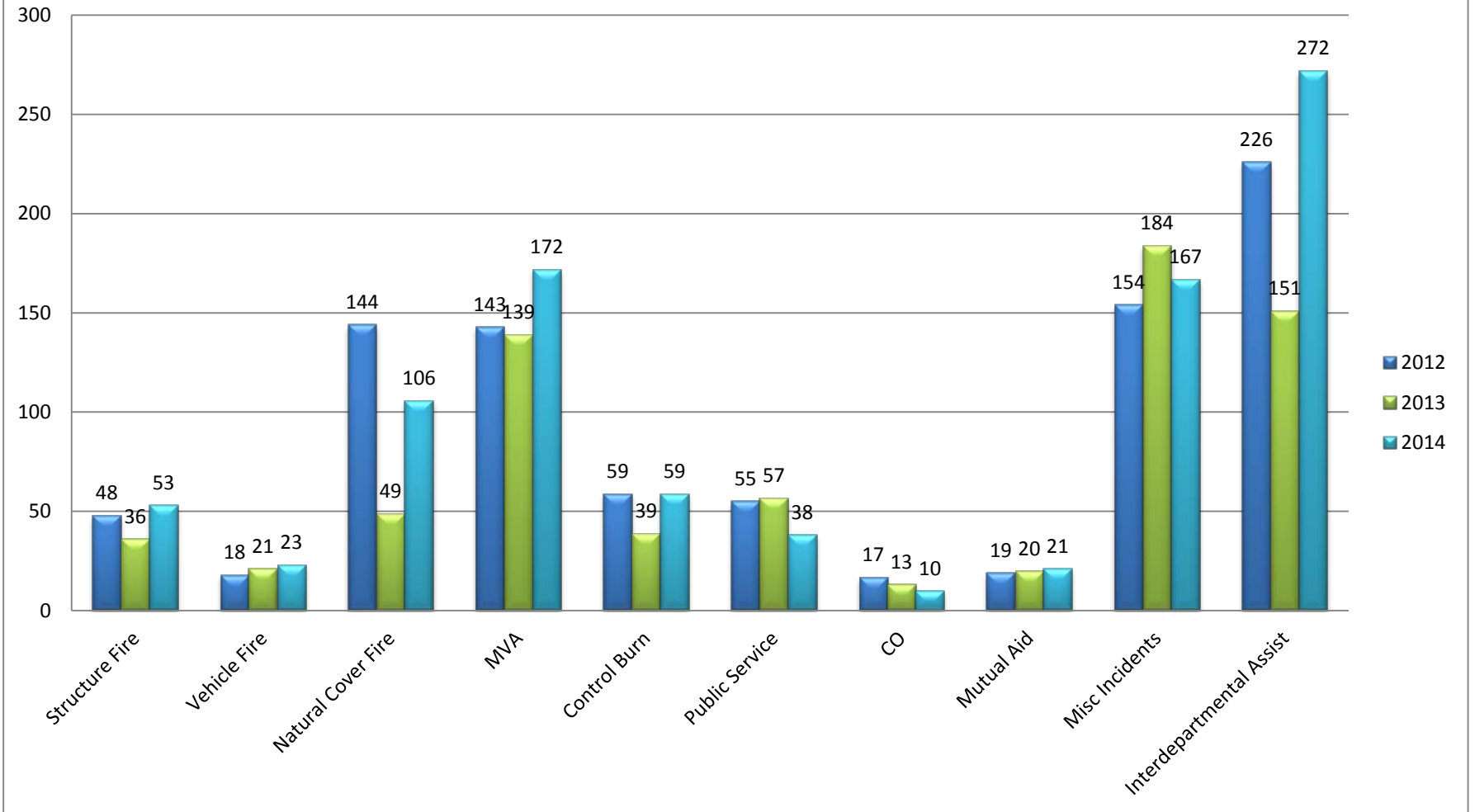
## Percentage of Responses By Station



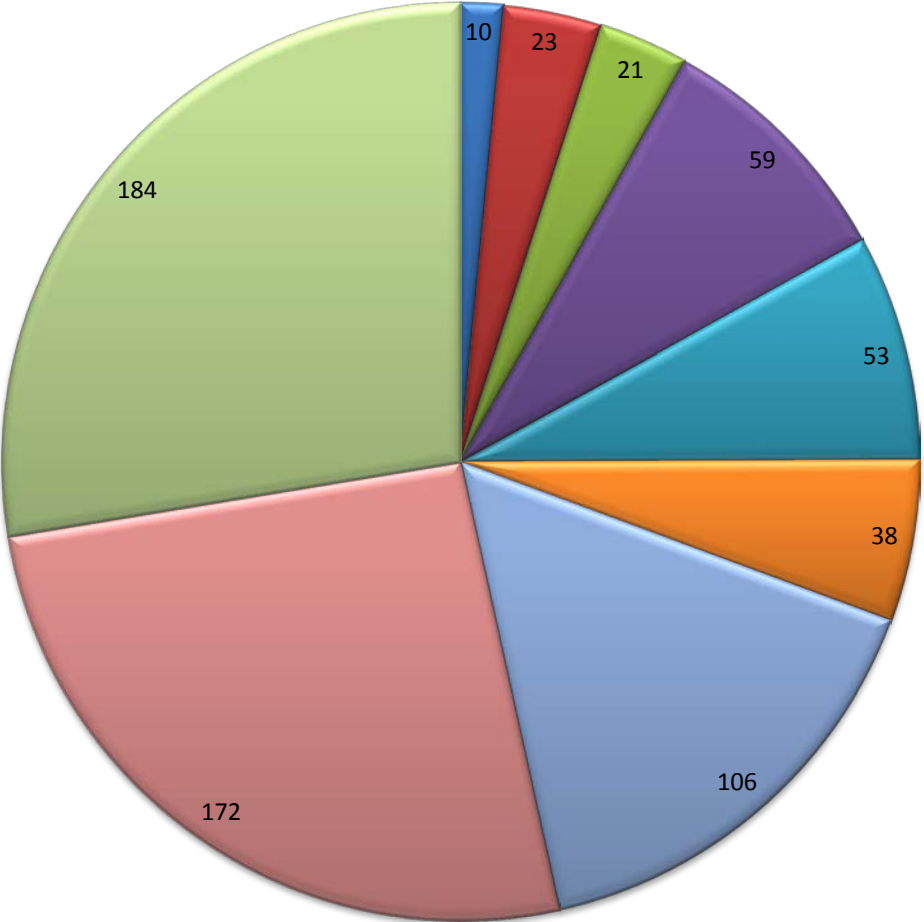
## Percentage of Responses By Station - 3 Year Comparison



## Responses by Type - 3 Year Comparison



# Number of Incidents By Type



- CO
- Vehicle Fire
- Mutual Aid
- Control Burn
- Structure Fire
- Public Service
- Natural Cover Fire
- MVA
- Misc Incidents

## Number of Calls Per Year

