

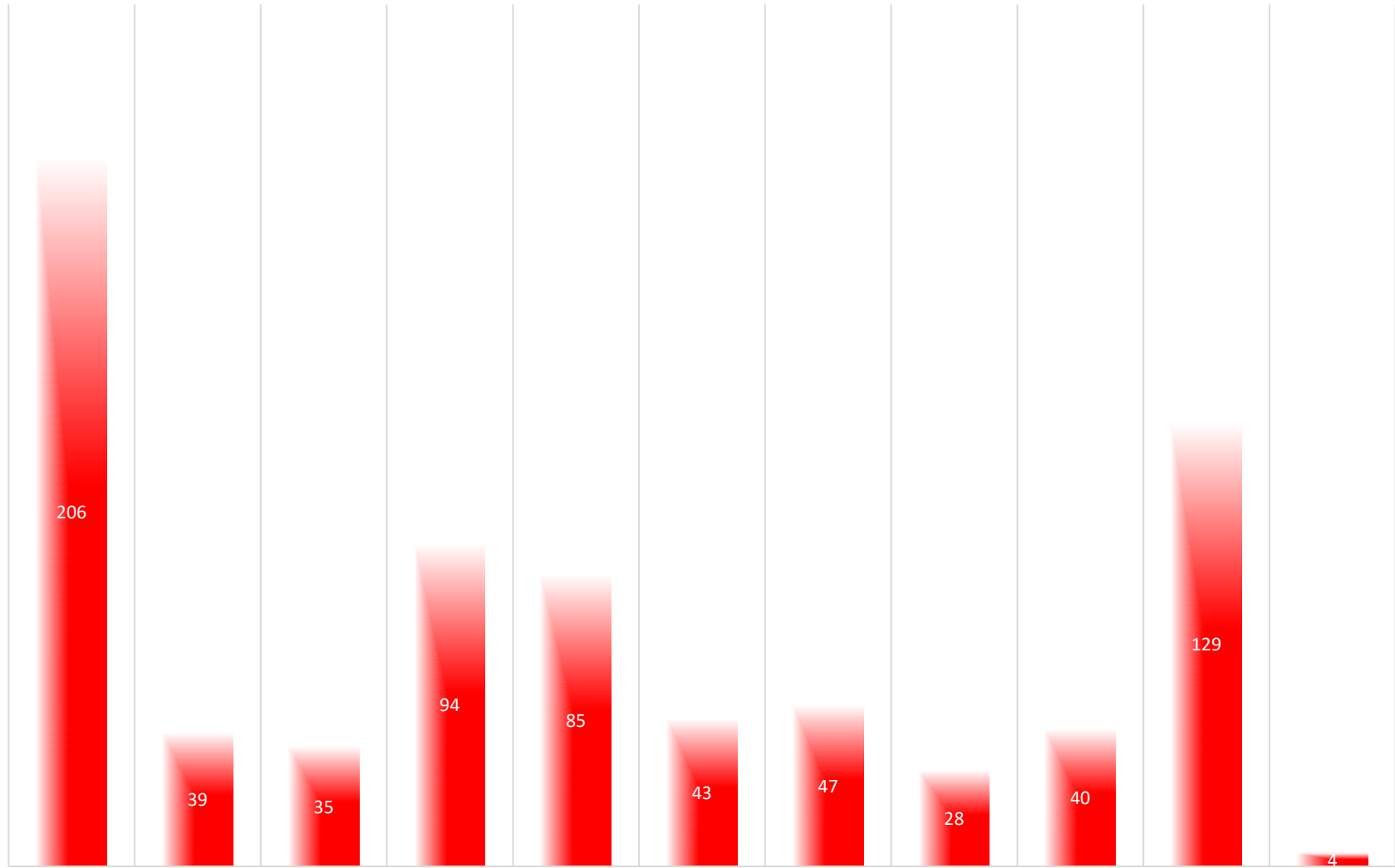
# Johnson County Fire Protection District



## 2015 Response Summary

# NUMBER OF RESPONSES PER STATION

■ 2015



STATION 1

STATION 2

STATION 3

STATION 4

STATION 5

STATION 6

STATION 7

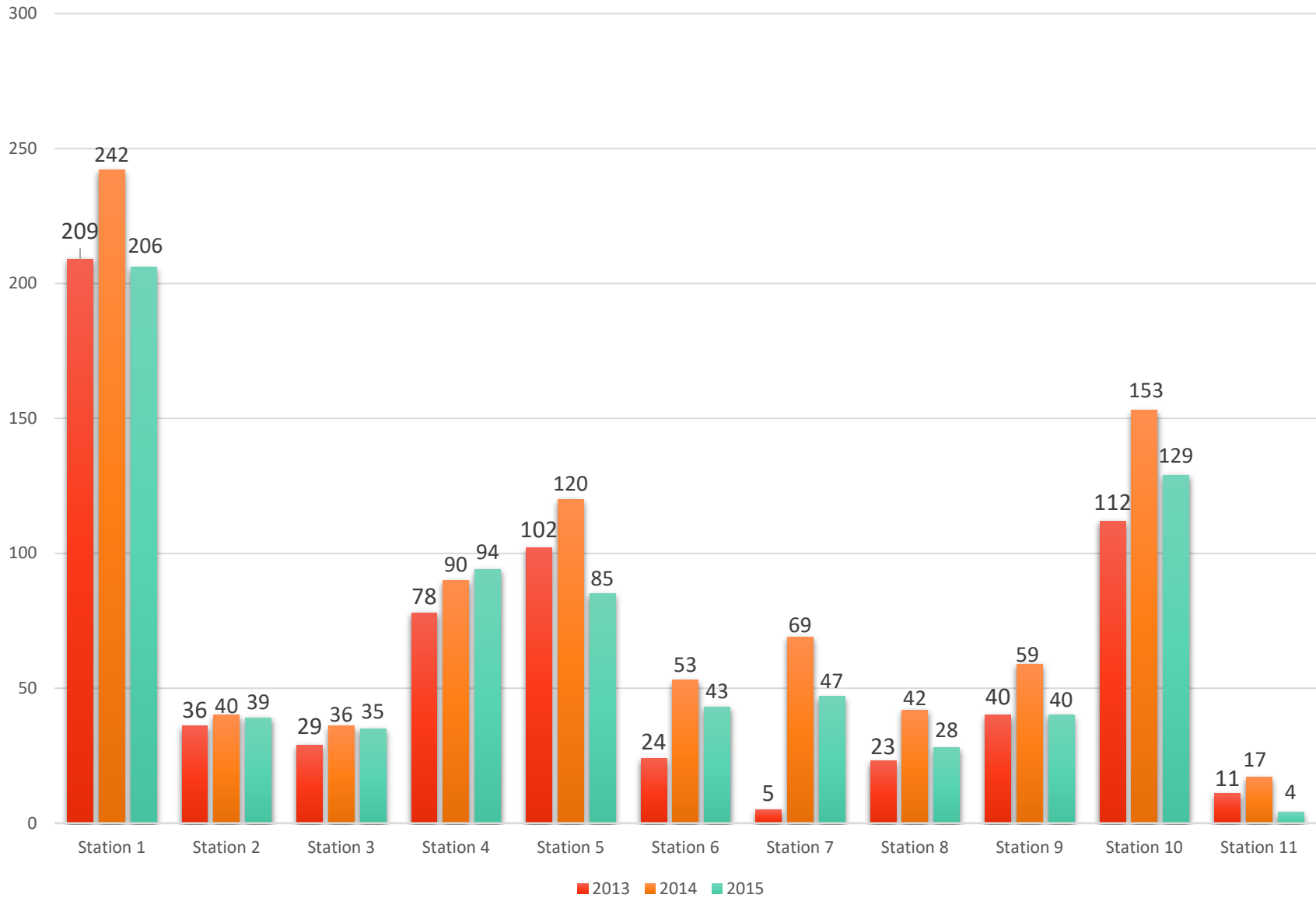
STATION 8

STATION 9

STATION 10

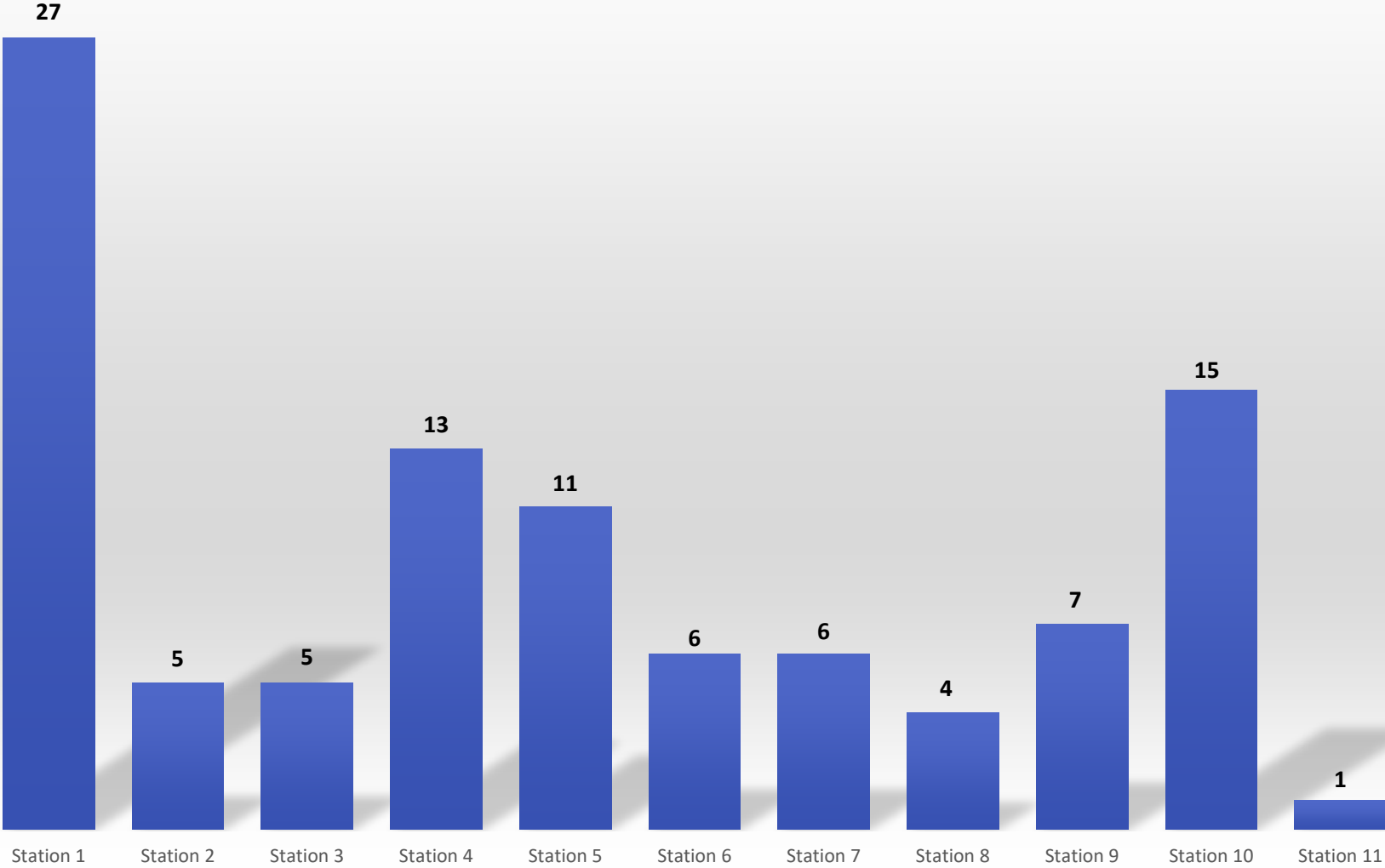
STATION 11

## Number of Responses Per Station - 3 Year Comparison

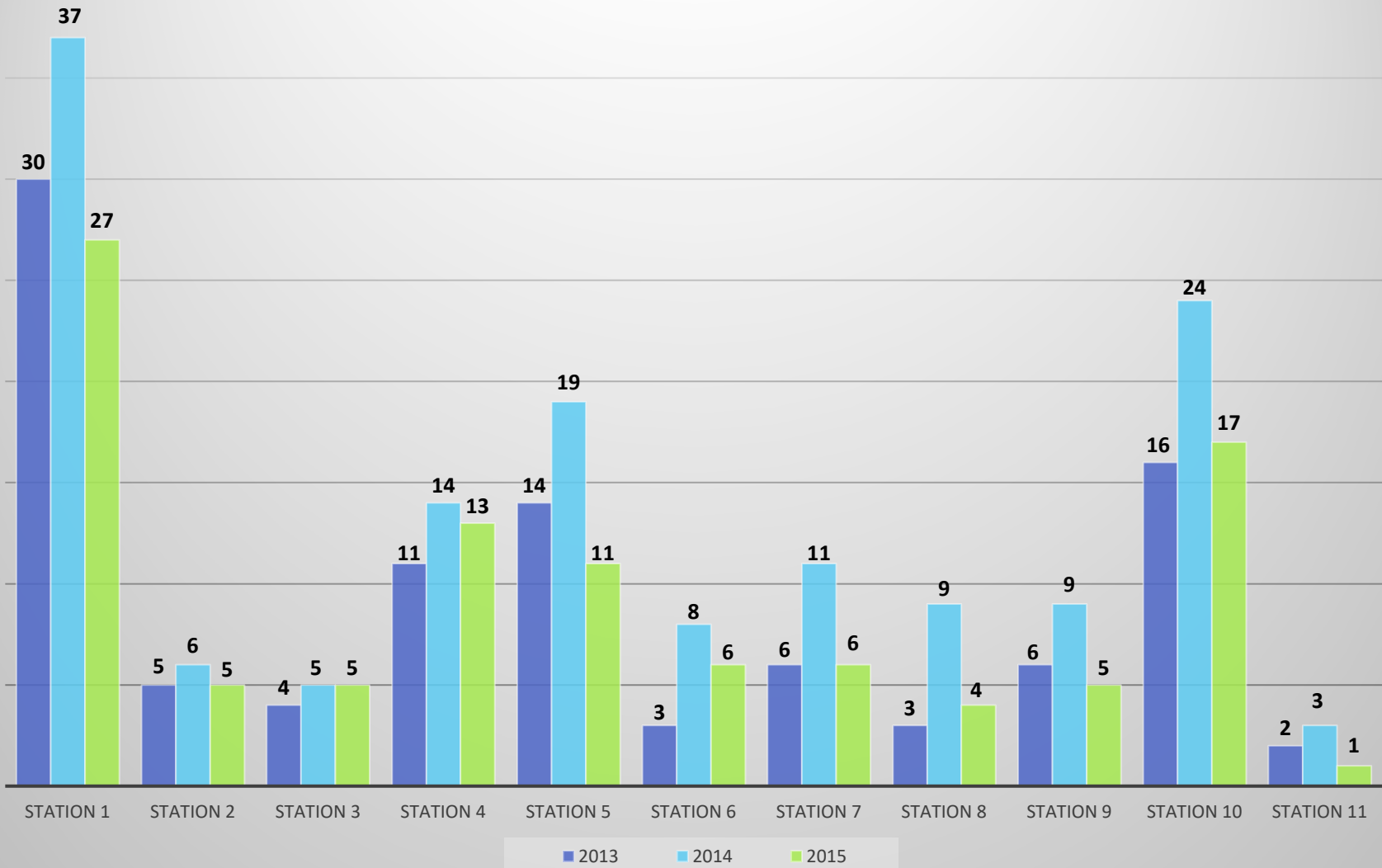


# Percentage of Responses by Station

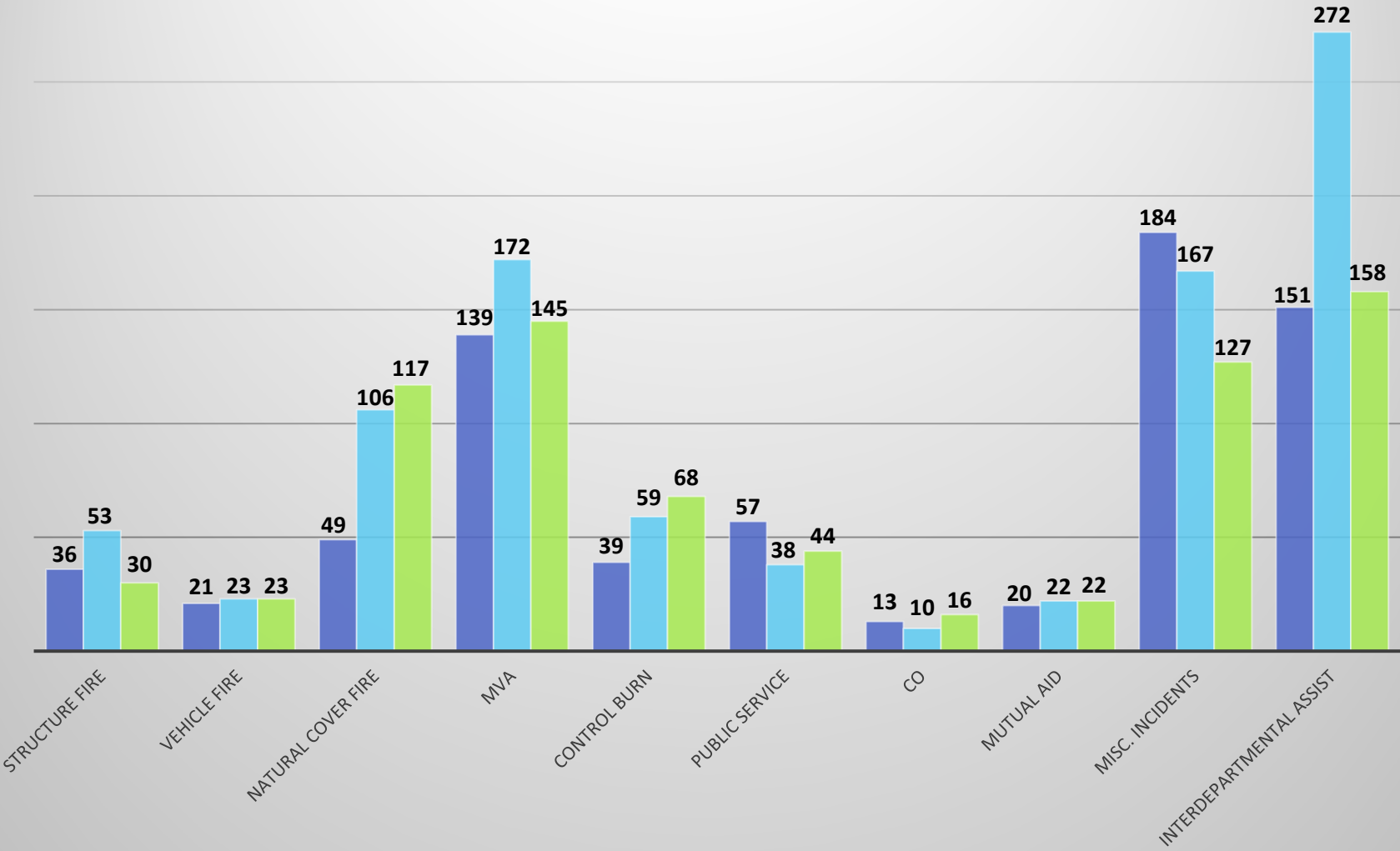
■ 2015



## Percentage of Responses by Station - 3 Year Comparison

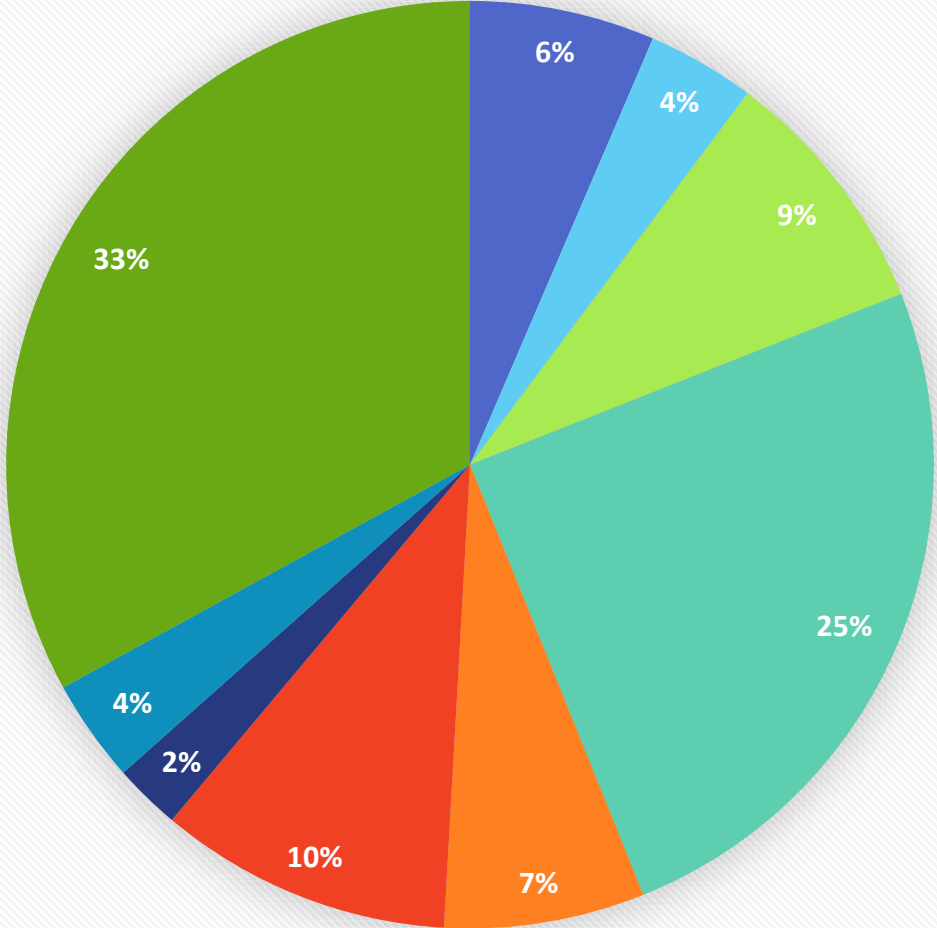


# Responses by Type - 3 Year Comparison



■ 2013 ■ 2014 ■ 2015

### Number of Incidents By Type



- Structure Fire
- Vehicle Fire
- Natural Cover Fire
- MVA
- Control Burn
- Public Service
- CO
- Mutual Aid
- Misc. Incidents

# Number of Calls Per Year

