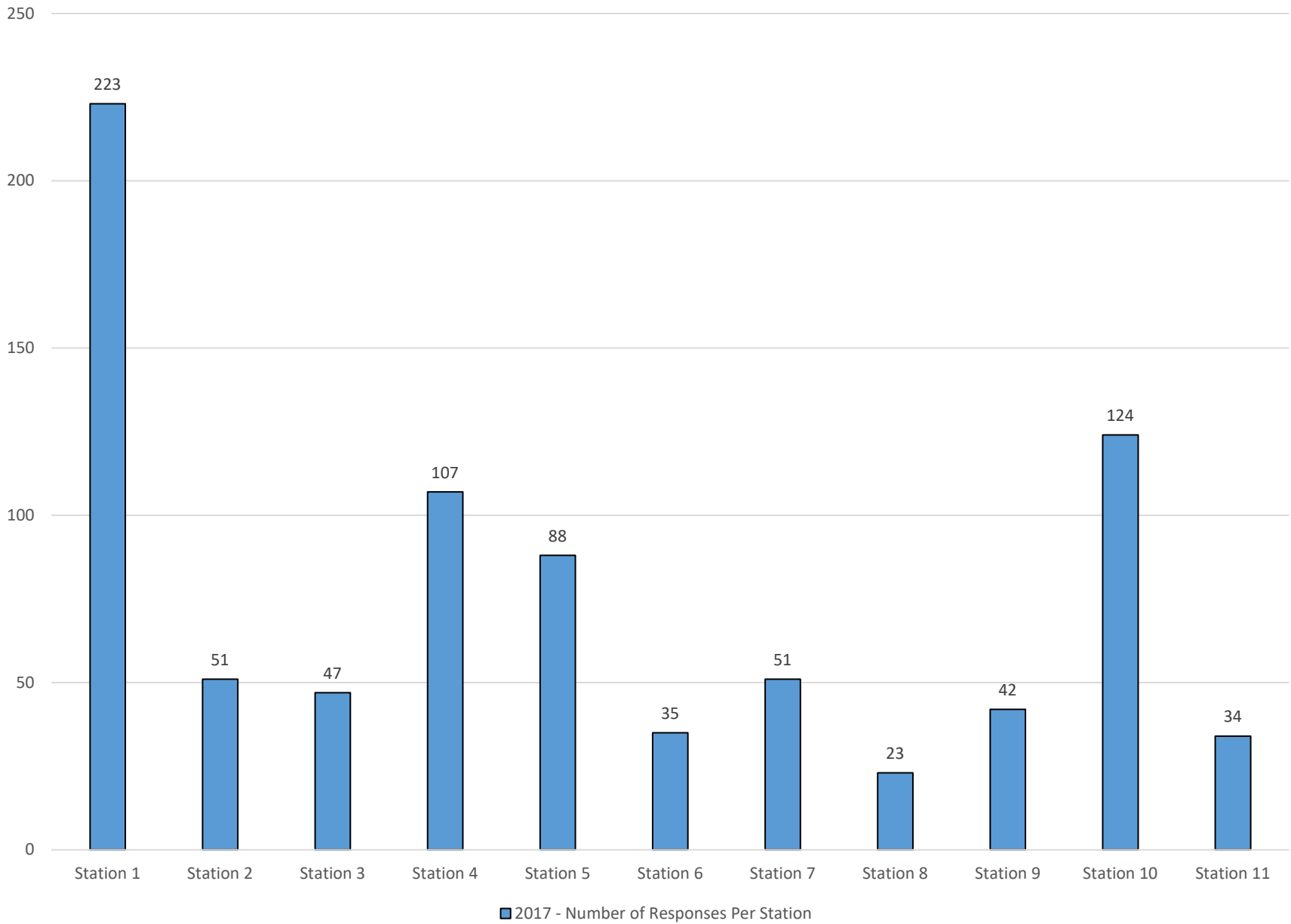


Johnson County Fire Protection District

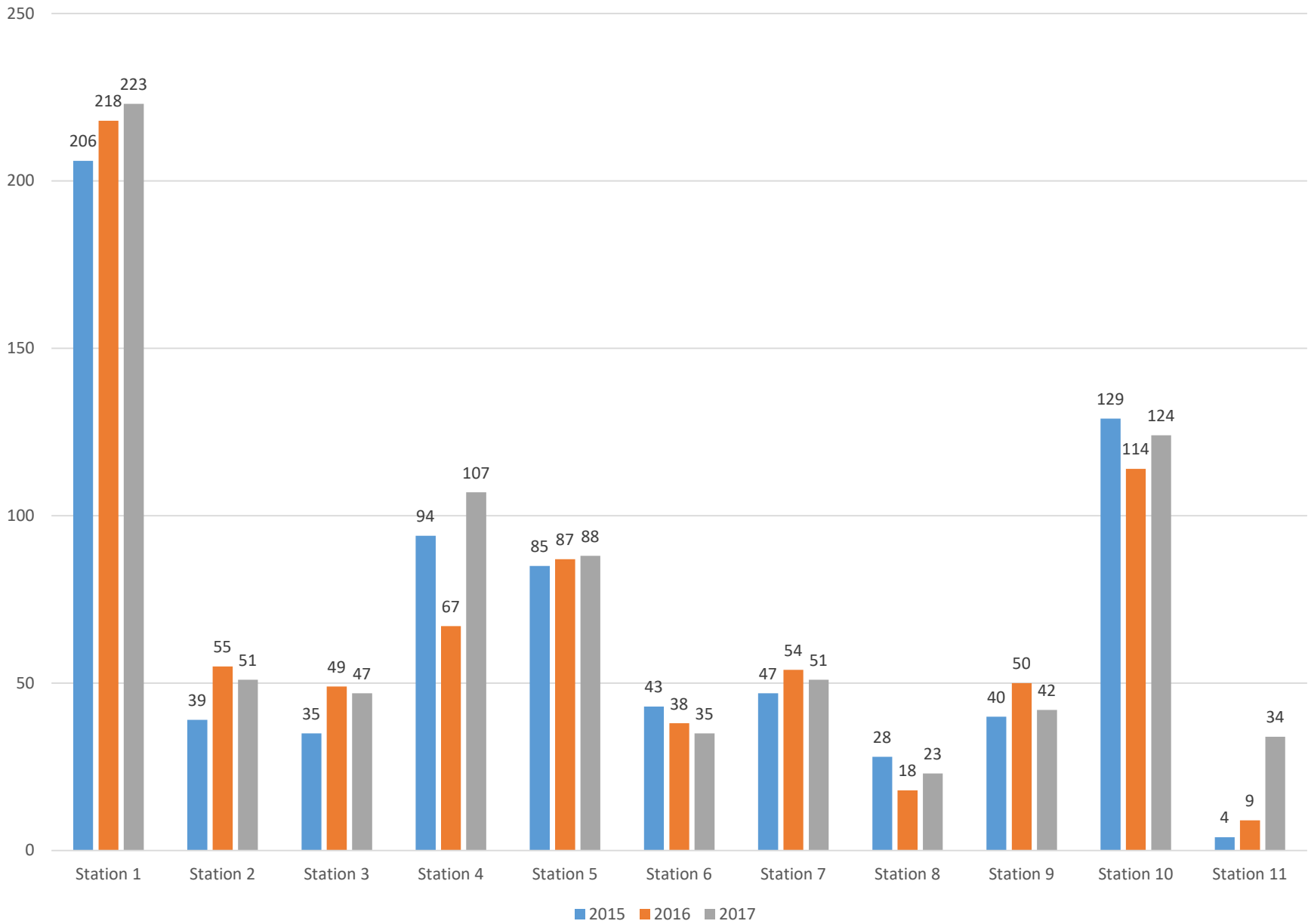


2017 Response Summary

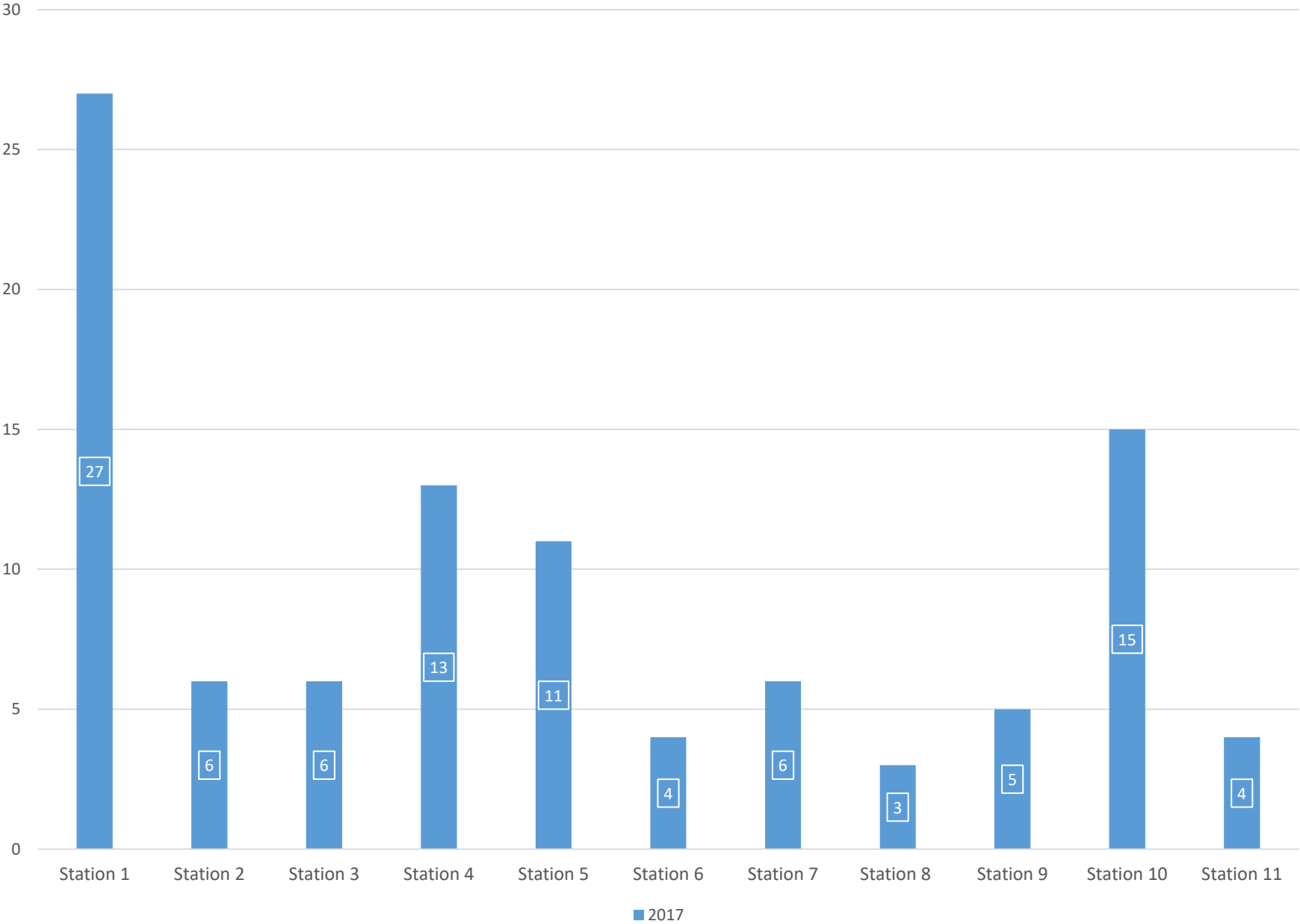
2017 - Number of Responses Per Station



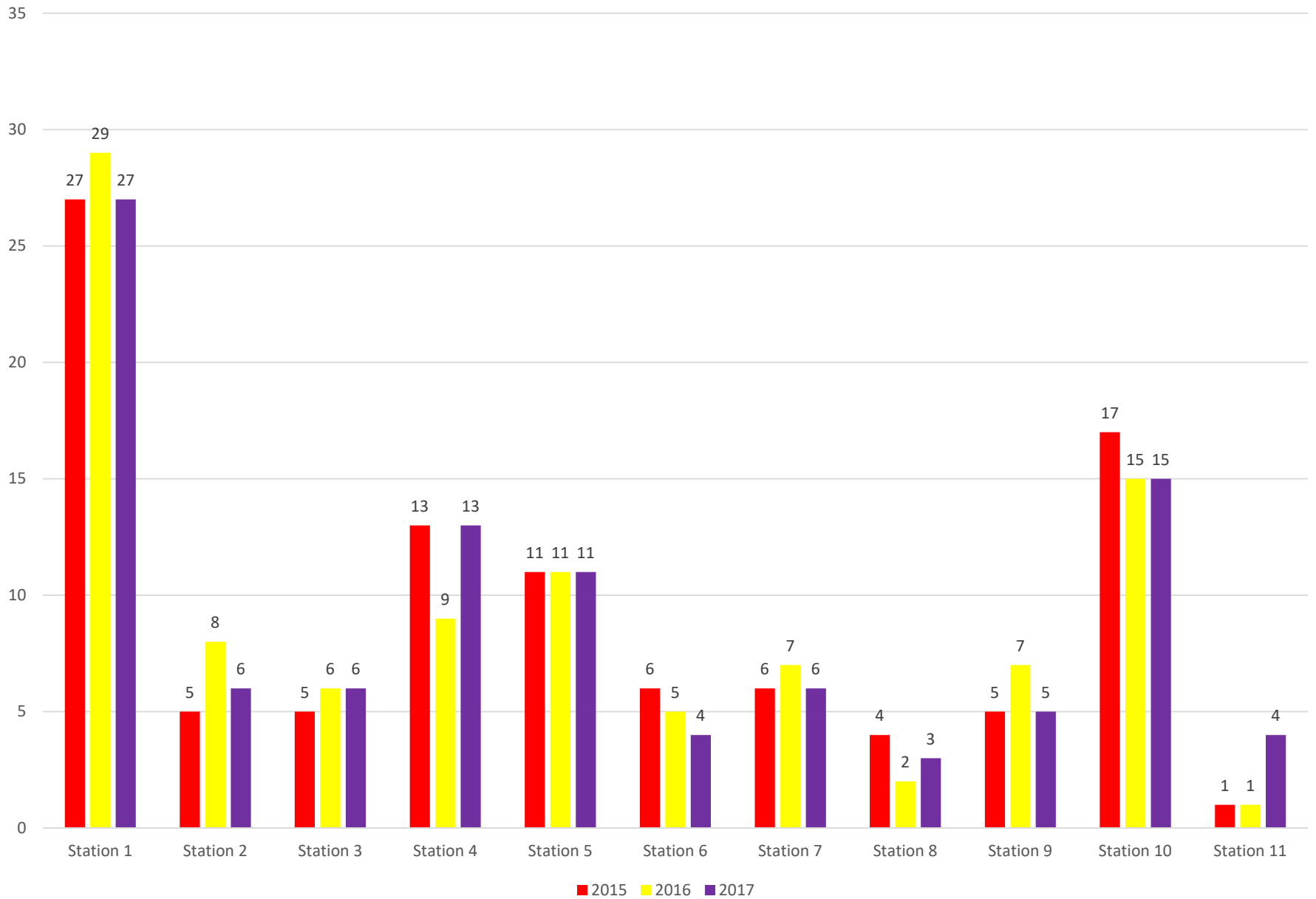
Number of Responses Per Station - 3 Year Comparison



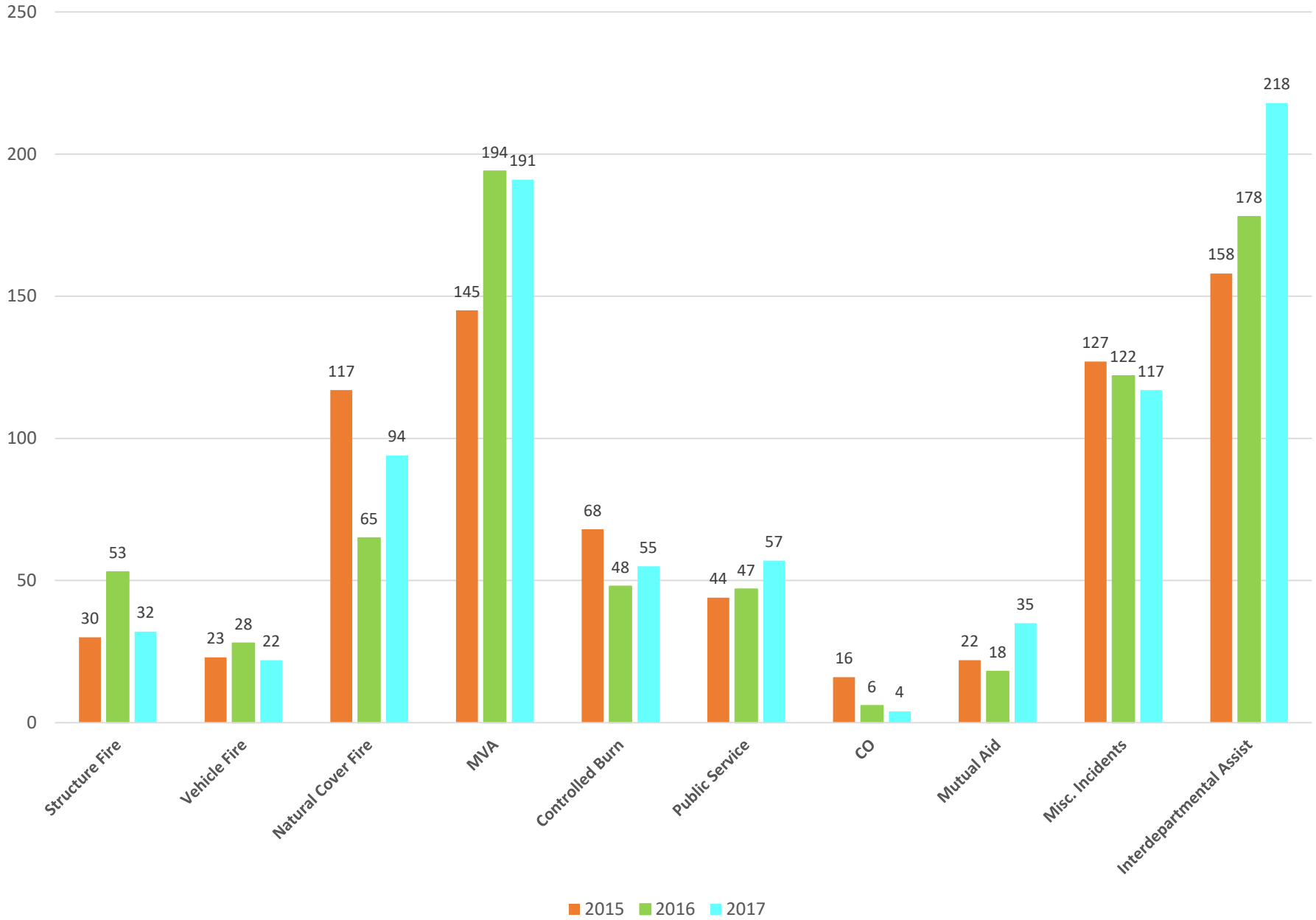
Percentage of Responses by Station



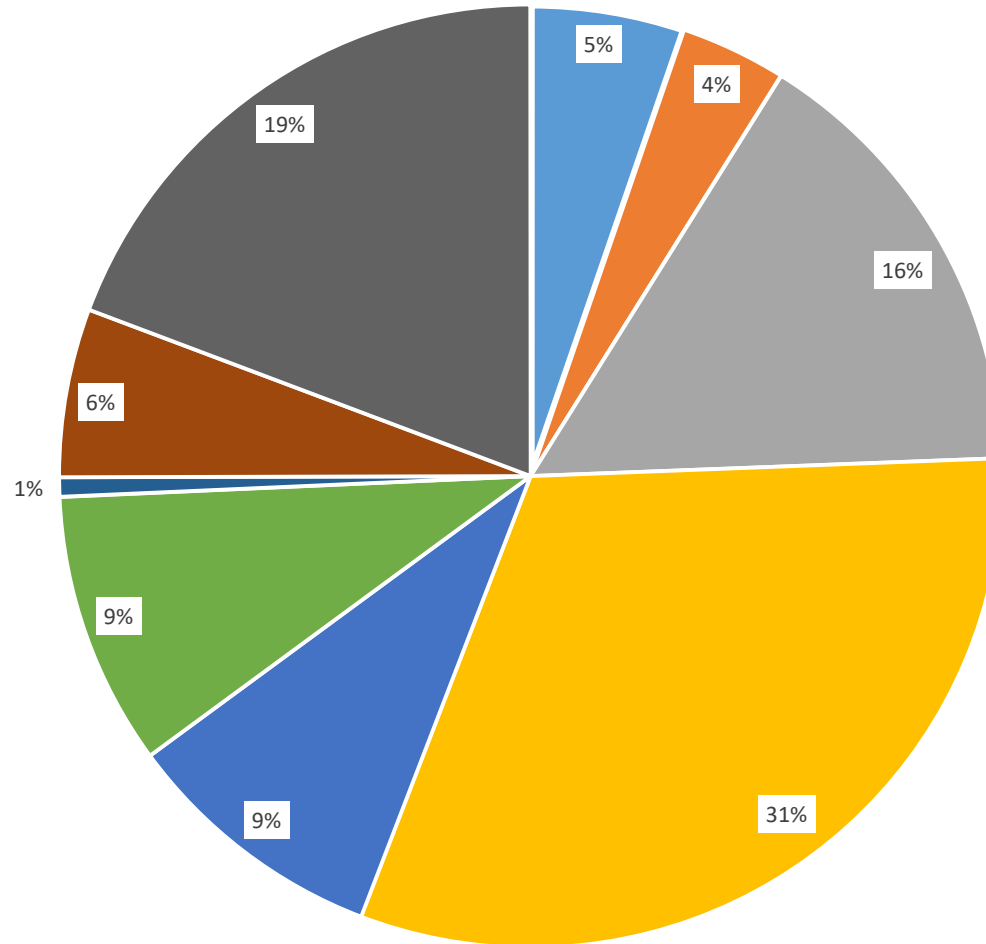
Percentage of Responses by Station - 3 Year Comparison



Responses by Type - 3 Year Comparison



Number of Incidents by Type



- Structure Fire
- Vehicle Fire
- Natural Cover Fire
- MVA
- Controlled Burn
- Public Service
- CO
- Mutual Aid
- Misc. Incidents

Number of Calls Per Year

